

Product Specifications

1. Product Overview

- 1.1 Product Name: Single-Axis Search and Tracking Servo Pan-Tilt System
- 1.2 Product Model: RU-PTU-S-55-005-32-R
- 1.3 Product Description:

The turntable subsystem receives control commands sent by the radar array via the RS422 serial port, including commands for turntable rotation, stop, homing, positioning, array locking, array unlocking, and speed control. It also outputs azimuth angle information, turntable status information, and heartbeat information to the radar array through the RS422 serial port.

Product Features:

- ✓ Supports circular scanning, sector scanning, and tracking of the radar, and provides power supply and signal transmission paths for the upper and lower equipment of the servo unit.
- ✓ Has the function of controlling the azimuth to point to the target airspace according to control commands.
- ✓ Has the function of real-time angle information display and reporting.
- ✓ Has turntable real-time status monitoring and safety protection functions.

2. Technical Parameters

2.1 Parameter Table

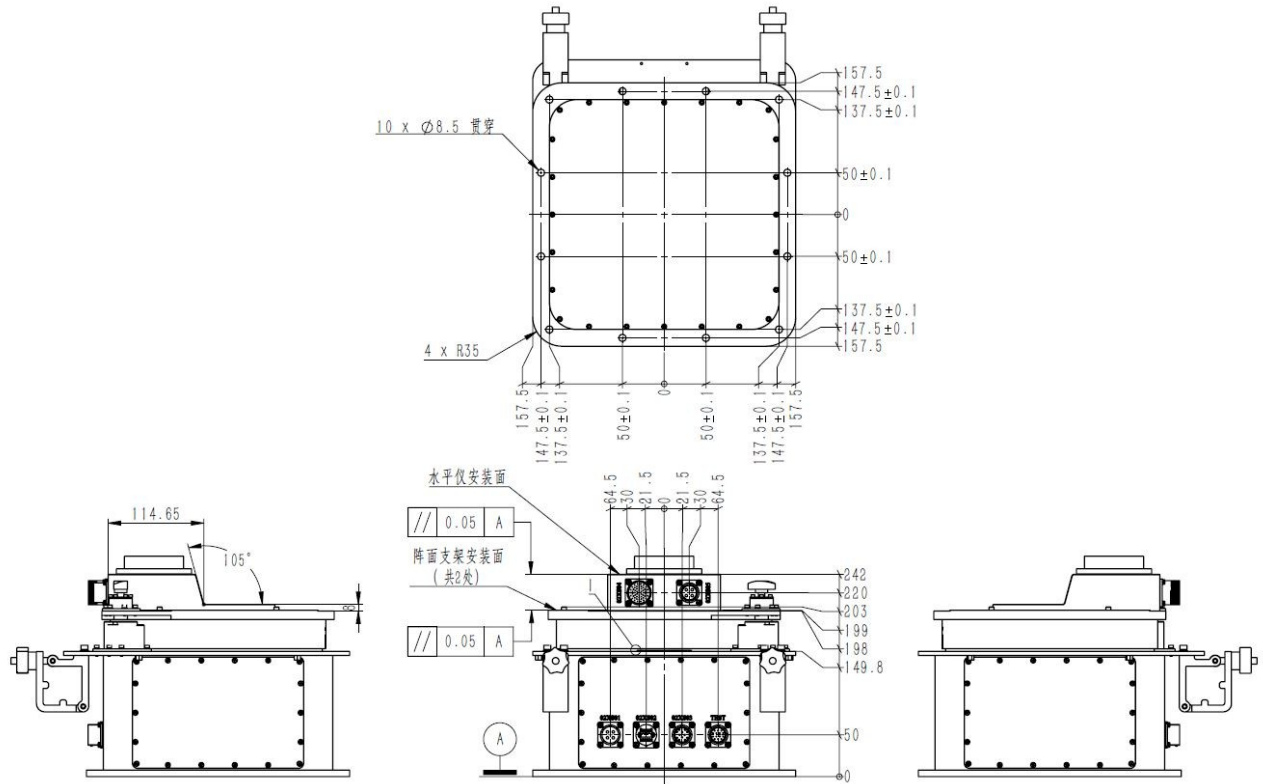
Technical Indicators			
Category	Item	Parameters	Remarks
Performance Parameters	Positioning Accuracy	±0.05°	
	Maximum Load	55KG	
	Rated Rotational Speed	Azimuth: 360°/s	
	Rotational Acceleration	Azimuth: 80°/s ²	
	Rotational Range	Azimuth: 0~360°	
Mechanical Parameters	Weight	32KG	
	Dimensions	315 *315*242 (L*W*H*, mm)	
Electrical Parameters	Rated Supply Voltage	AC220v	
	Rated Power	300W	
Environmental Parameters	Operating Temperature	-40°~+85°	
	Storage Temperature	-60°~+85°	
	Protection Class	IP65	
	Wind Resistance Class	Level 6 Wind	

2.2 Interface Information Table

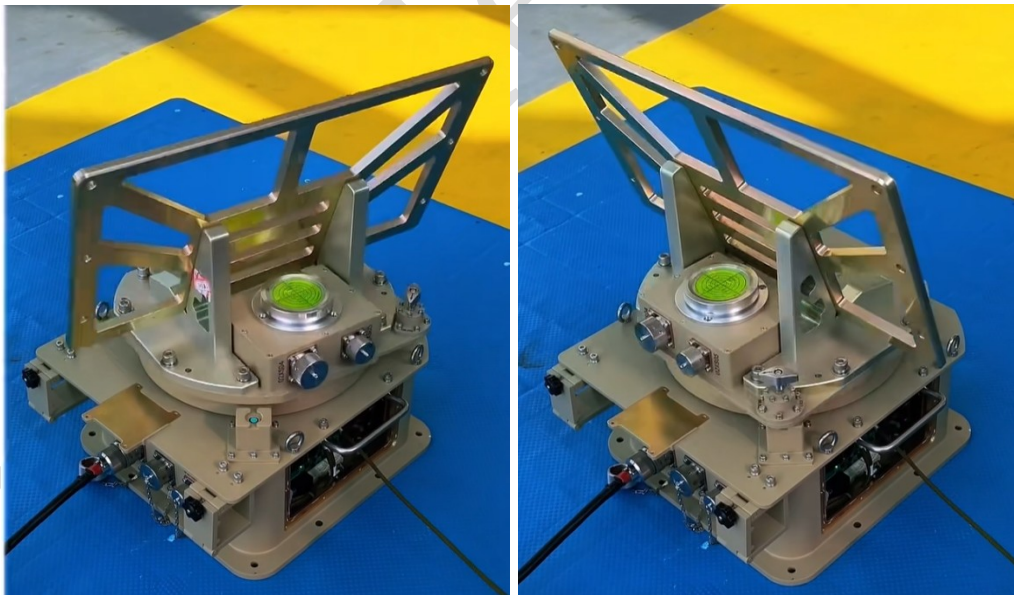
Category	Interface ID	Cores Qty.	Interface Definition	Remarks
Power Interface	PW01	4	AC220V/50A	
Communication Interface	CM01	8	RJ45/1000M	
	CM02	12	RS422, Inertial Navigation Power Supply	

3. Overall Dimensions

3.1 Dimension Drawing



3.2 Appearance Photos



4. Product Connection Schematic Diagram

